



c o s t e  g r o u p

**X series and YLC series**  
*are now integrated into  
one platform that enables  
communication with the  
C-Bus and Modbus protocols  
of the devices.*

**WEBGARAGE**

OPEN INTEGRATION

*is the solution for a perfect  
integration between the  
X series and the YLC  
series.*

# YHC 700

## NETWORK MANAGER MODBUS

The YHC 700 (Y-help-communicator on platform 700) or MULTI-BUS FIELD COMMUNICATION MANAGER can integrate devices over the RS485 buses or via ethernet, connecting them to a monitoring system developed by Coster Group or 3rd party. YHC 700 manages three types of systems

- Control systems with YLC 7..-8..
- Monitoring systems
- Hybrids (or Mixed) (control & monitoring) systems

In the first case, YHC 700 allows the system remote management and configuration either via ethernet or via MDM 232.

In the second and third cases, the system remote management and configuration is supported via ethernet only.

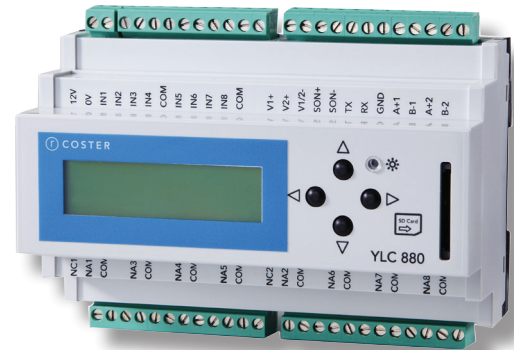


# YLC 880

## MULTI-CONFIGURABLE CONTROLLER IN 8 DIN MODULE CASE

Is a multi-configurable controller for heating, cooling, domestic hot water production, air treatment and BMS automation.

YLC 880 can be programmed using CosterCAD; applications can be installed on the device via SD card. YLC 880 systems can be equipped with touch screens with custom graphics.



### INPUT/OUTPUT

1-wire sensor	(UI (digital/ analogue)	DO	AO (0-10 V)	Serial port
16	8	8	2	RS232 and RS485 RTU

**FLEXIBILITY:** a single product that can be adapted to any type of plant, from the simplest thermal plant to the most complex systems;

**SCALABILITY:** the expansion modules allow to increase the number of inputs and outputs referred to the single controller. Furthermore, if a plant consists of several individually controlled technical rooms, it is possible to create a communication between the various control units;

**SIMPLICITY:** the programming menu is intuitive and it can maintain the same structure on any type of plant;

**ACCESSIBILITY:** with a GSM/GPRS, 3G modem or a network card it is possible to carry out remote control of the controller, know the plant status and configure the sending of specific alarm messages.

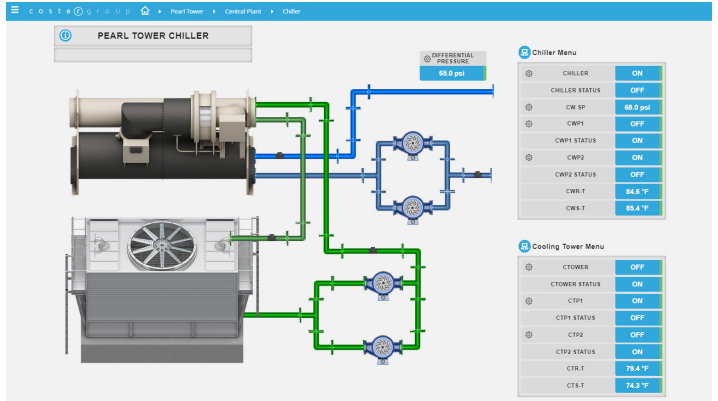
simple and interoperable

# WEB GARAGE

## OPEN INTEGRATION

**W**eb-based supervision platform for Building Automation and Energy Management systems. Solution combined with a licence relative to the number of points which are used. Scalable and adaptable according to the complexity of the system provides total graphic flexibility, ensuring to the end user an easily managed remote control of the plant using optimized communication with the installed devices.

It is possible to incorporate CosterWeb with the devices in the field, taking advantage of the distributed logic in complex WEB architectures. Full integration of the open standard Haystack 4.0 protocol increasingly used for IoT applications.



## MULTIPROTOCOL COMMUNICATION



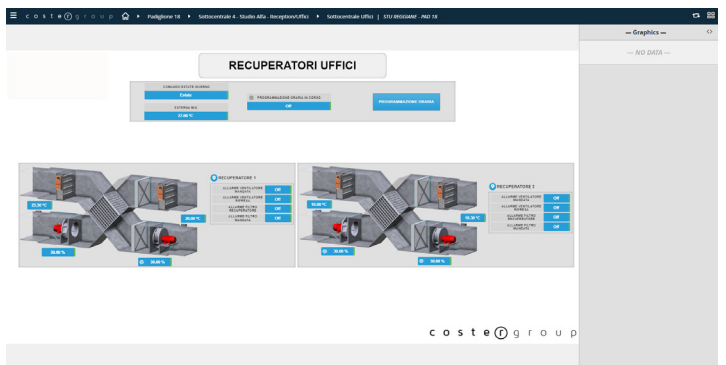
Full integration of Building Automation's standard communication protocols including BACnet and Modbus. Dedicated development for communication with C-BUS devices.



## EASY INTEGRATION



Easy integration of native Coster Group and 3rd party systems through a simple and guided process.



## CUSTOM GRAPHIC PAGES



Creation of custom graphic pages based on customer needs. With association of physical points to advanced and customizable graphic components.

- **Cyber security**  
Platform designed and developed according to IEC62443 IT safety standards. Full support to IT departments to meet the highest levels of security.
- **Scheduler**  
Intuitive and simplified management of calendars for remote programming on Coster Group devices and group propagation of schedules on multiple controlled plants.

- **Alarms**  
Complete management of alarms and events through a single acknowledge, with storage of user operations based on user credentials. Easy to configure, automatic alarm propagation for single users or groups.
- **History and database**  
Data logging on TSDB (Time Series Data Base) for faster querying and extrapolation of the required data.

# freely programmable controllers and expansion modules:

## ZBC 862

### MS/TP BACNET CONTROLLER

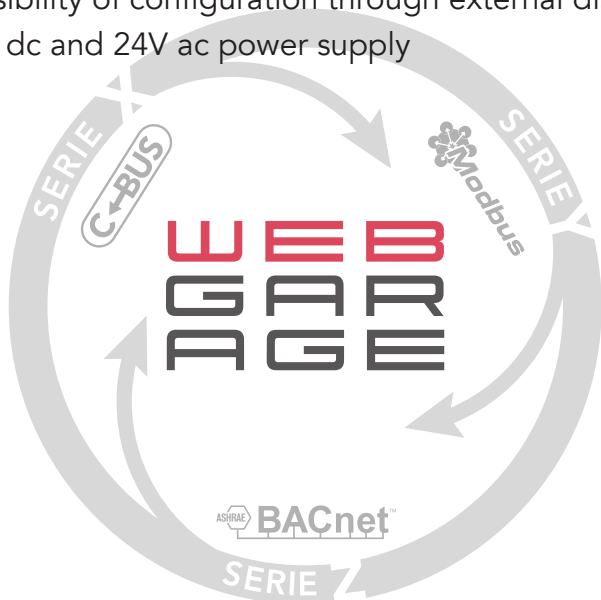
ZBC 862 is a controller for HVAC systems that can be configured through applications CosterCAD, is programmable through the new CosterBlocks application.

Application and FW download locally through USB port and remotely.

- Control and telemanagement only from WebGarage
- Possibility of configuration through external display DSP 120
- 12V dc and 24V ac power supply



The universal inputs are:  
analogue, digital and sensors.  
The first two are also 4...20mA



**O**ur aim is to have in every building the balanced interaction of all components, to **supply the right energy at the right time**, at the lowest cost.

# Full adjustment, easily programmable, web-based plant supervision:

## GPC 642

### COMPACT CONTROLLER WITH 4G MODEM INCORPORATED

GPC 642 is a compact controller with preloaded applications. Equipped with RS485 and M-Bus port for integration of devices with Modbus protocol and IEF 276 heat integrators respectively.

- 6-module DIN device, with built-in 4G communication engine
- Control and telemanagement with Climaoffice and WebGarage
- 12V dc and 24V ac power supply



c o s t e  g r o u p

PERSONAL AUTOMATION



**costergroup.eu**

MILAN

Via San G.B. De La Salle, 4/A  
20132 Milano  
tel: +39 022722121  
export.dept@costergroup.eu

DERBY - UK

5 Shaftesbury Street South,  
Sir Francis Ley Industrial Park  
Derby DE23 8YH  
tel: +44 (0) 1332 200555  
ukbranch@costergroup.eu

ABANO TERME

EDOLO

NOVI LIGURE



REALIZZATO CON IL SOSTEGNO DI



**UNIONE EUROPEA**  
Fondo europeo di sviluppo regionale



Regione  
Lombardia

**fesr**

POR FESR 2014-2020 / INNOVAZIONE E COMPETITIVITÀ