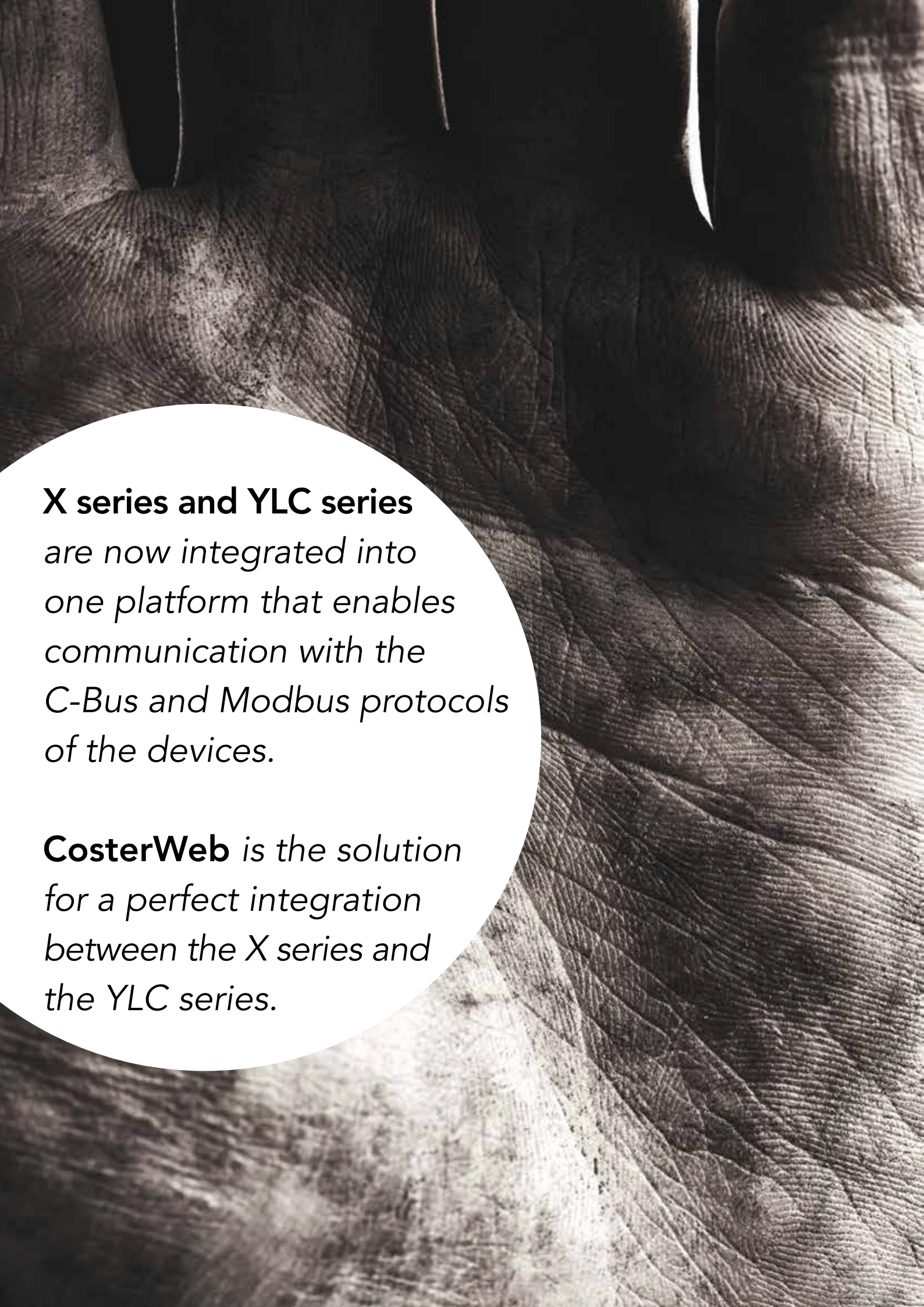




c o s t e  g r o u p



**X series and YLC series**  
*are now integrated into  
one platform that enables  
communication with the  
C-Bus and Modbus protocols  
of the devices.*

**CosterWeb** *is the solution  
for a perfect integration  
between the X series and  
the YLC series.*

# YHC 700

## NETWORK MANAGER MODBUS

The YHC 700 (Y-help-communicator on platform 700) or MULTI-BUS FIELD COMMUNICATION MANAGER can integrate devices over the RS485 buses or via ethernet, connecting them to a monitoring system developed by Coster Group or 3rd party. YHC 700 manages three types of systems

- Control systems with YLC 7...-8..
- Monitoring systems
- Hybrids (or Mixed) (control & monitoring) systems

In the first case, YHC 700 allows the system remote management and configuration either via ethernet or via MDM 232.

In the second and third cases, the system remote management and configuration is supported via ethernet only.



# YLC 800

## MULTI-CONFIGURABLE CONTROLLER IN 8 DIN MODULE CASE

Is a multi-configurable controller for heating, cooling, domestic hot water production, air treatment and BMS automation.

YLC 880 can be programmed using CosterCAD; applications can be installed on the device via SD card. YLC 880 systems can be equipped with touch screens with custom graphics.



### INPUT/OUTPUT

1-wire sensor	(UI (digital/ analogue)	DO	AO (0-10 V)	Serial port
16	8	8	2	RS232 and RS485 RTU

**FLEXIBILITY:** a single product that can be adapted to any type of plant, from the simplest thermal plant to the most complex systems;

**SCALABILITY:** the expansion modules allow to increase the number of inputs and outputs referred to the single controller. Furthermore, if a plant consists of several individually controlled technical rooms, it is possible to create a communication between the various control units;

**SIMPLICITY:** the programming menu is intuitive and it can maintain the same structure on any type of plant;

**ACCESSIBILITY:** with a GSM/GPRS, 3G modem or a network card it is possible to carry out remote control of the controller, know the plant status and configure the sending of specific alarm messages.



# simple and interoperable

## COSTERWEB SYSTEM

**W**eb-based supervision platform for Building Automation and Energy Management systems. Solution combined with a licence relative to the number of points which are used. Scalable and adaptable according to the complexity of the plant. The system provides total graphic flexibility, ensuring to the end user an easily managed remote control of the plant using optimized communication with the installed devices.

It is possible to incorporate CosterWeb with the devices in the field, taking advantage of the distributed logic in complex WEB architectures. Full integration of the open standard Haystack 4.0 protocol increasingly used for IoT applications.



## MULTIPROTOCOL COMMUNICATION

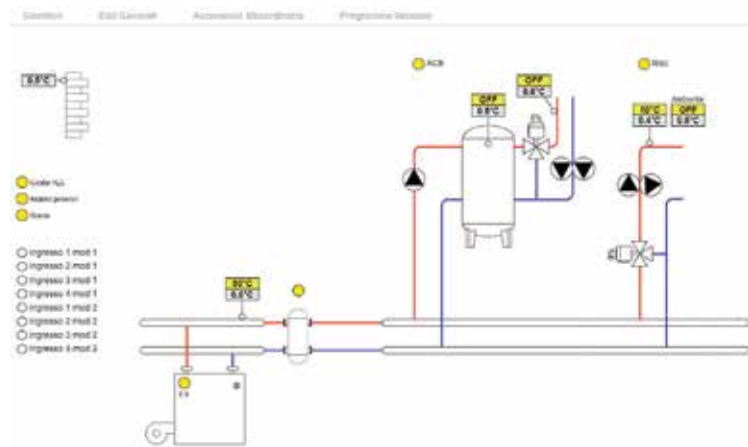


*Full integration of Building Automation's standard communication protocols including BACnet and Modbus. Dedicated development for communication with C-BUS devices.*

## EASY INTEGRATION



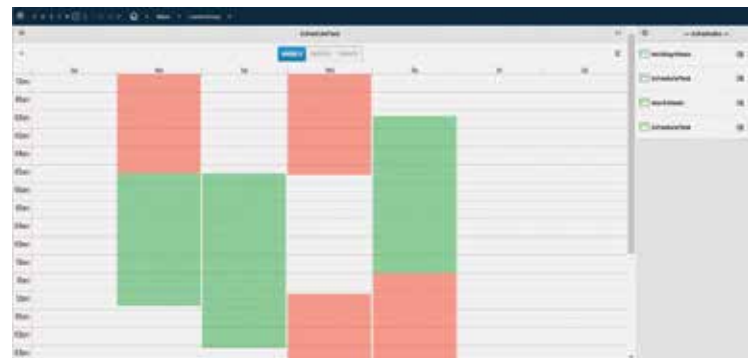
*Easy integration of native Coster Group and 3rd party systems through a simple and guided process.*



## CUSTOM GRAPHIC PAGES



*Creation of custom graphic pages based on customer needs. With association of physical points to advanced and customizable graphic components.*



- **Cyber security**

Platform designed and developed according to IEC62443 IT safety standards. Full support to IT departments to meet the highest levels of security..

- **Scheduler**

Intuitive and simplified management of calendars for remote programming on Coster Group devices and group propagation of schedules on multiple controlled plants..

- **Alarms**

Complete management of alarms and events through a single acknowledge, with storage of user operations based on user credentials. Easy to configure, automatic alarm propagation for single users or groups.

- **History and database**

Data logging on TSDB (Time Series Data Base) for faster querying and extrapolation of the required data.

# *digital controller for boiler plant with annual programming:*

## **OPTIMISER COMPENSATOR**

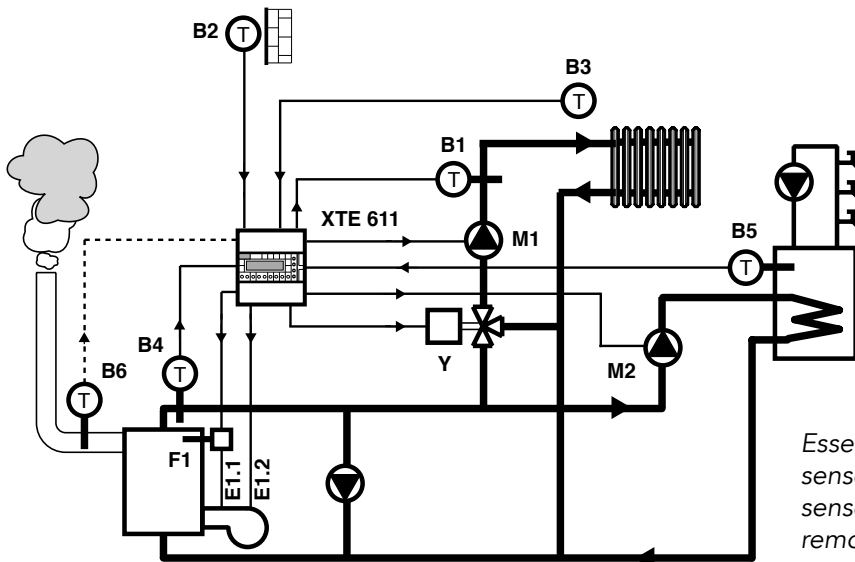
- Control of Boiler temperature
- Compensated control of heating zones
- Control of DHW temperature and of DHW pump
- Stand alone or with optional communications



**C**ommunication systems: C-Ring for exchanging data between local controllers C-Bus: XTE 611 Tele-management optional by using C-Bus Plug-in type ACB 468 to be ordered separately as accessory

## *designed for control of small and medium-size heating plants, comprising of:*

- 1 single - or two-stage boiler, or double furnace (two single-stage burners).
- 1 centralised heating plant room.
- 1 calorifier for DHW. Communications with other controllers via C-Ring serial connection.



Essential sensors: 1 outside sensor, 1 heating flow sensor, 1 boiler sensor. Optional accessories: 1 room sensor, 1 DHW sensor, 1 or 2 flue gas sensors, 1 remote control.

c o s t e  g r o u p

PERSONAL AUTOMATION



**costergroup.eu**

MILAN

Via San G.B. De La Salle, 4/A  
20132 Milano  
tel: +39 022722121  
[export.dept@costergroup.eu](mailto:export.dept@costergroup.eu)

DERBY - UK

5 Shaftesbury Street South,  
Sir Francis Ley Industrial Park  
Derby DE23 8YH  
tel: +44 (0) 1332 200555  
[ukbranch@costergroup.eu](mailto:ukbranch@costergroup.eu)

ABANO TERME

EDOLO  
NOVI LIGURE

