

ROTARY ACTUATOR WITH MANUAL OPERATION OPTION, 20 NM TORQUE

CVSR ...

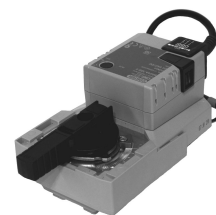
COPPIA ALBERO 200 Kg/cm (20 Nm)

APPLICATION

- Reversible actuator with direct coupling to VZG 2... and VYG3... valves
- 3-terminal switch, fixed 90° rotation angle

Features

- Power supply see table
- Protection IP 54



Code	Power supply V~ (VA)	Control	Run time (s)	Torque N/m	Auxiliary end-of-run	Valve linkage	Valves (DN)		Data Sheet
							VZG 2..	VYG 3..	
CVSR 097	100÷240 V ~ (7)	3 punti	90	20	1 or 2	F04	1/2"÷2"	1/2"÷2"	M 413
CVSR 095	24 V ~/- (5,5)	3 punti	90	20	1 or 2	F04	1/2"÷2"	1/2"÷2"	M 413

ACCESSORIES

Code	Description
FCS 123	Fine corsa ausiliario con 1 contatto in commutazione 3 (0,5) A, 250 V~ regolabile 0...100%
FCS 223	Fine corsa ausiliario con 2 contatti in commutazione 3 (0,5) A, 250 V~ regolabili indipendenti 0...100%